

MCA 91-33-4-1

LEAF
FUND

ed as a
r 1982.
on with
ality of
7 mil-

THE RURAL

lion people on South African farms.

The Rural Foundation's programme of people development in rural areas is supported by organised agriculture, the private and public sectors.



THE RURAL FOUNDATION

THE ORGANISATION

The Rural Foundation was registered as a non-profit company on 23 December 1982.

It is a non-governmental organisation with the specific aim of improving the quality of life and standard of living of nearly 7 million people on South African farms.

The Rural Foundation's programme of people development in rural areas is supported by organised agriculture, the private and public sectors.

METHOD

Life on a farm may be depicted as follows:



Rural community development is the process by which the abovementioned domains - social life, work life and management - are integrated in order to have a positive influence on the quality of life and standard of living of people on farms and to promote self-care and self-responsibility.

Within any particular district there are a number of farms, hence a number of micro-communities which in turn form the larger community. Each community is unique and within each certain facilities and development possibilities exist.

A prerequisite for the successful implementation of the community development process is that the various participating parties are earnestly involved in it, that is, with research, programme planning, implementation and evaluation.

Participation in the Rural Foundation's programme is voluntary. When a group of farmers is interested in this comprehensive programme of human development, they have to establish a Community Development Association (CDA). The CDA then applies for affiliation to the Rural Foundation.

As soon as funds become available, a full-time Community Development Officer is appointed. The CDA is responsible for 25% of the budget for the Developer.

The role of the Developer is to give guidance, support and advice to farmers and the farming community and to co-ordinate the development process.

The CDA also has at its disposal the service of a Regional Manager who, together with the local CDA and the Developer, evaluate the process on a continuous basis in the light of previously determined objectives.

AGRICULTURAL STATISTICS

South Africa has a surface area of 1 123 226km² (excluding the Republics of Transkei, Bophuthatswana, Venda and Ciskei). About 12% of the total surface area is arable.

Population in Agriculture

Farmers +- 49 000

Workers 1 376 000

Traditionally workers and their families live on the farm, totalling approximately 7 million people (23% of the South African population).

19,8% of the economically active people are employed by agriculture, which makes agriculture the single biggest employer in South Africa.

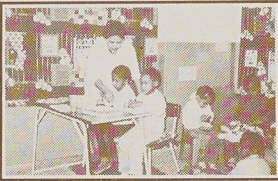
South Africa is one of the few net food exporting countries.



ACHIEVEMENTS

PRE-SCHOOL CARE

- 500 Pre-School Facilities
- 8 000 Children involved
- 765 Supervisors



HEALTH

204 Women have been trained as Primary Health Care Workers.



HOUSING

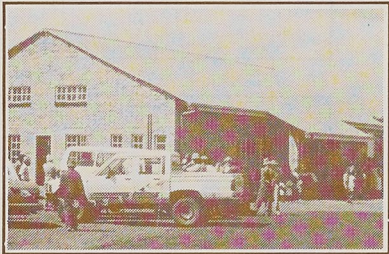
Capital expenditure by member farmers on housing for farm workers:

- 1985/86 = R 0,66 million
- 1986/87 = R 2,94 million
- 1987/88 = R15,61 million
- 1988/89 = R23,80 million



COMMUNITY CENTRES AND UPGRADING OF FARM SCHOOLS

With a private sector sponsorship 12 Community Centres have been erected and 230 Farm Schools have been upgraded.



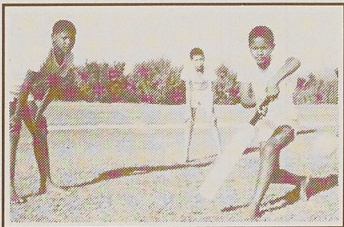
INSERVICE TRAINING

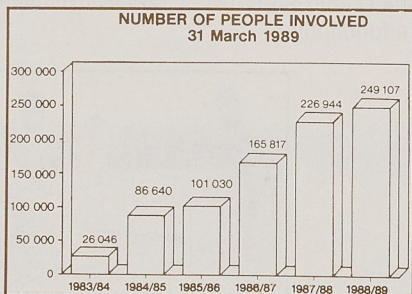
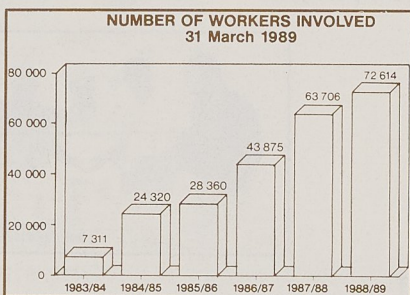
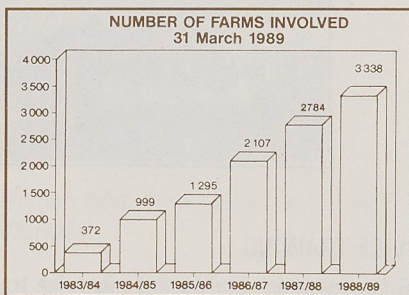
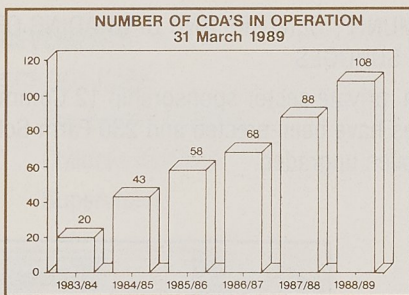
28 186 farmworkers underwent inservice training during the past year.



SPORT

More than 2 300 sport teams have been established and are functioning.





SERVICES PROVIDED

- * Resource Centre
- * Agricultural Wage and Salary Survey
- * 6M Simulation (Management, Materials, Markets, Money, Manpower, Machinery)
- * Personnel Management and Labour Relations Training
- * Liaison Committee Training for Farmworkers
- * Training for Farmers' Wives
- * Pre-School Training Programmes
- * Sport Training Programmes
- * Consultancy Service (Personnel Management and Labour Relations)
- * Information Programme for Visitors
- * Educational Programmes covering a wide range of subjects: Primary Health Care, Marriage Guidance, Family Planning, Road Safety, Parent-Child Relationships, Communication, etc.
- * Recruiting, Psychometric Testing and Placement
- * Training and Development for Rural Community Developers

BOARD OF DIRECTORS

Mr F J Malan (Chairman)

Mr J H H Coetzee (Vice-Chairman)

Mr N J Kotzé

Dr J H Schoeman

Mr J H van der Merwe

Chief Executive Officer

Mr O S Bosman

Address:

The Rural Foundation

P O Box 388

Stellenbosch

7600

Republic of South Africa

Telephone (02231) 76870

Telefax (02231) 2927

Teletex 555160=RUDEV

FR 088004720009

PAARL DRUKPERS